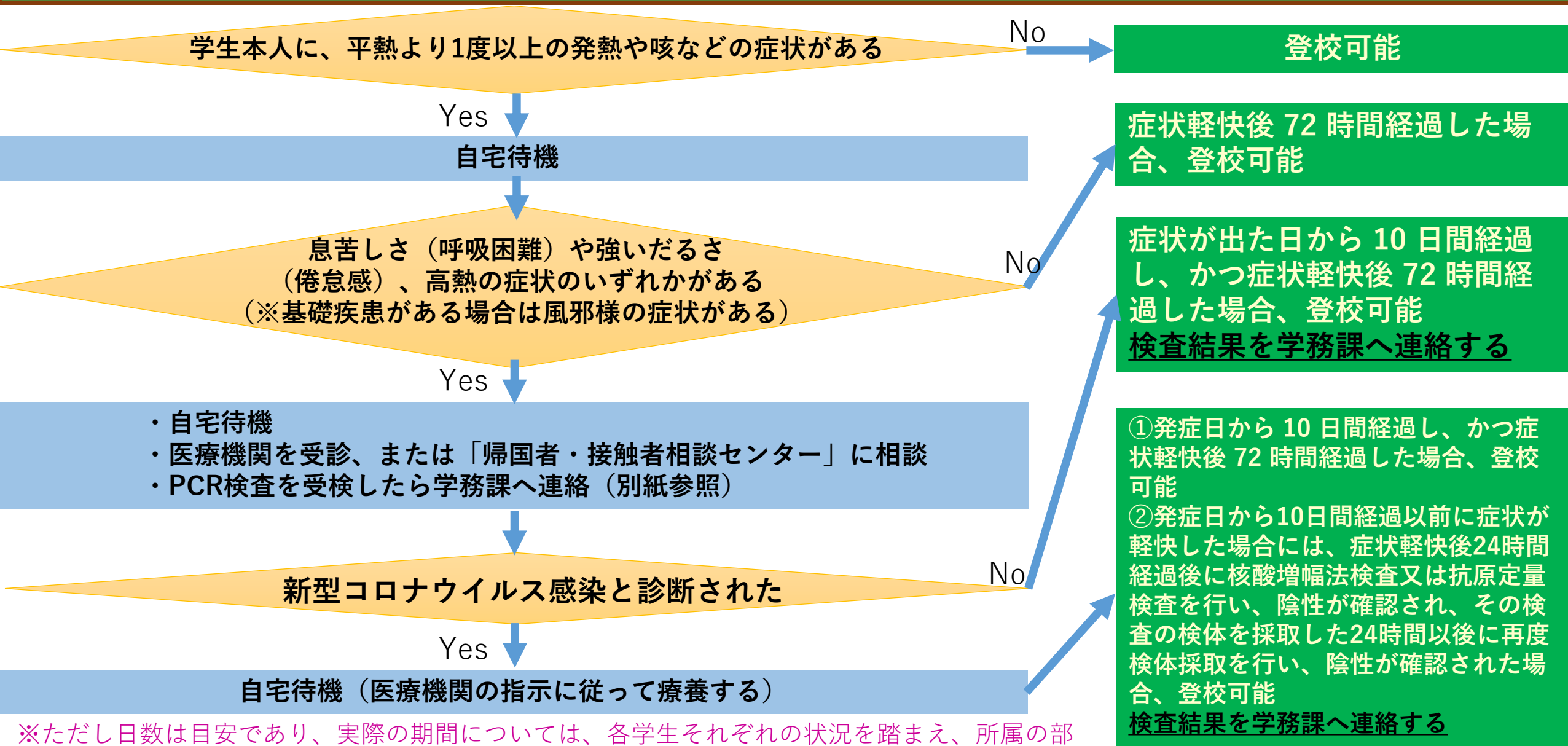
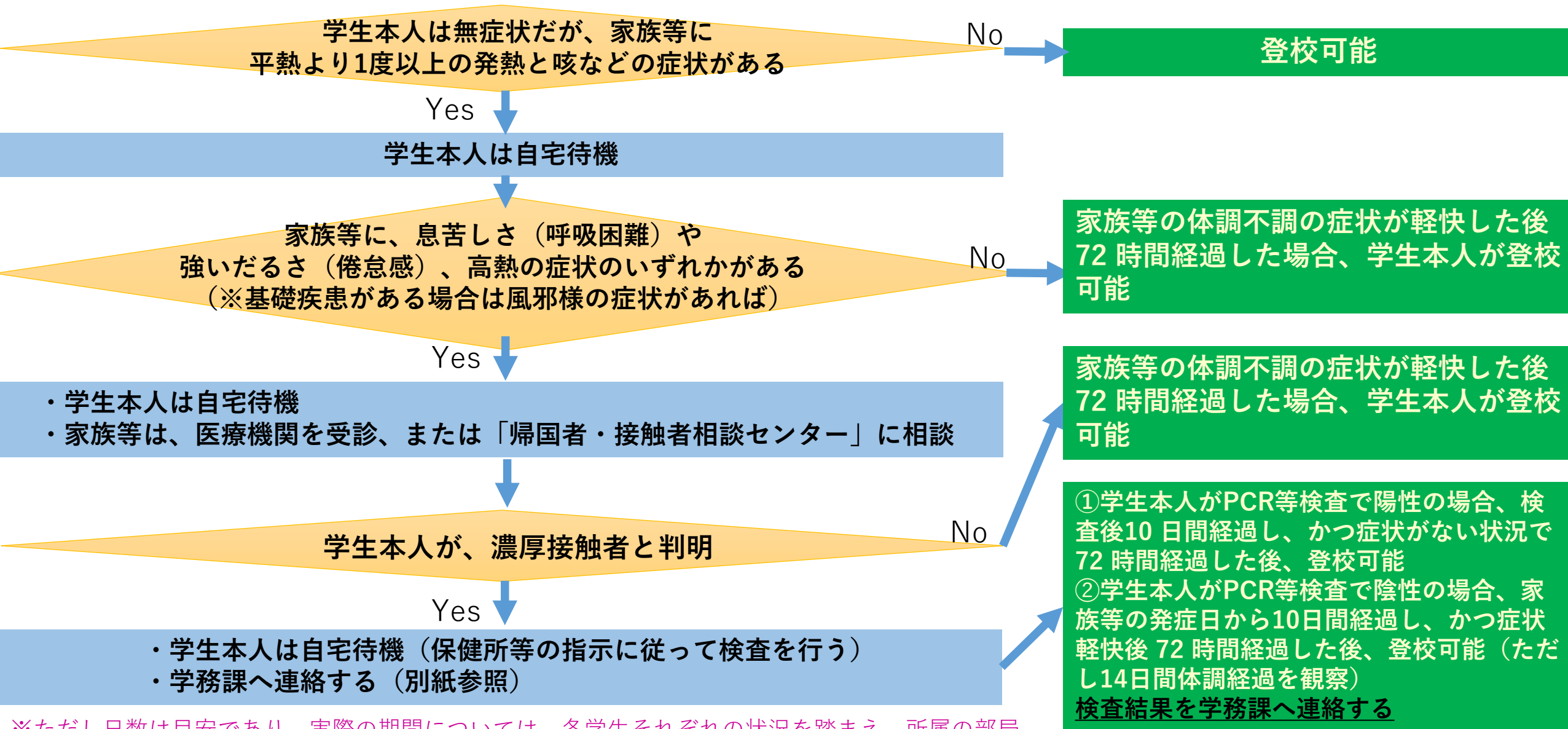


# 学生本人の体調不良時の自宅待機目安



※ただし日数は目安であり、実際の期間については、各学生それぞれの状況を踏まえ、所属の部局長等の判断により、この基準以上の期間自宅待機となる可能性がある。

# 家族等の体調不良時の自宅待機目安



※ただし日数は目安であり、実際の期間については、各学生それぞれの状況を踏まえ、所属の部局長等の判断により、この基準以上の期間自宅待機となる可能性がある。

# PCR検査を受けたら 濃厚接触者に指定されたら 新型コロナウイルスに感染したら

本学学生が感染の疑いがありPCR検査を受けた、濃厚接触者に指定された、または新型コロナウイルスに感染したら、下記の連絡先までご連絡ください。

## 【連絡先】

東京農工大学 学務課 042-367-5537

※業務時間外（休日、平日17：15～翌8：30）の連絡先  
守衛室 042-367-5504

- 確認事項
- ・ 氏名、学籍番号、連絡先
  - ・ 直近2週間の学内での接触者
  - ・ 直近2週間の学内での使用建物

○風邪様の症状（発熱、咳、のどの痛み、鼻水など）がある場合は、無理せず自宅で休養してください。

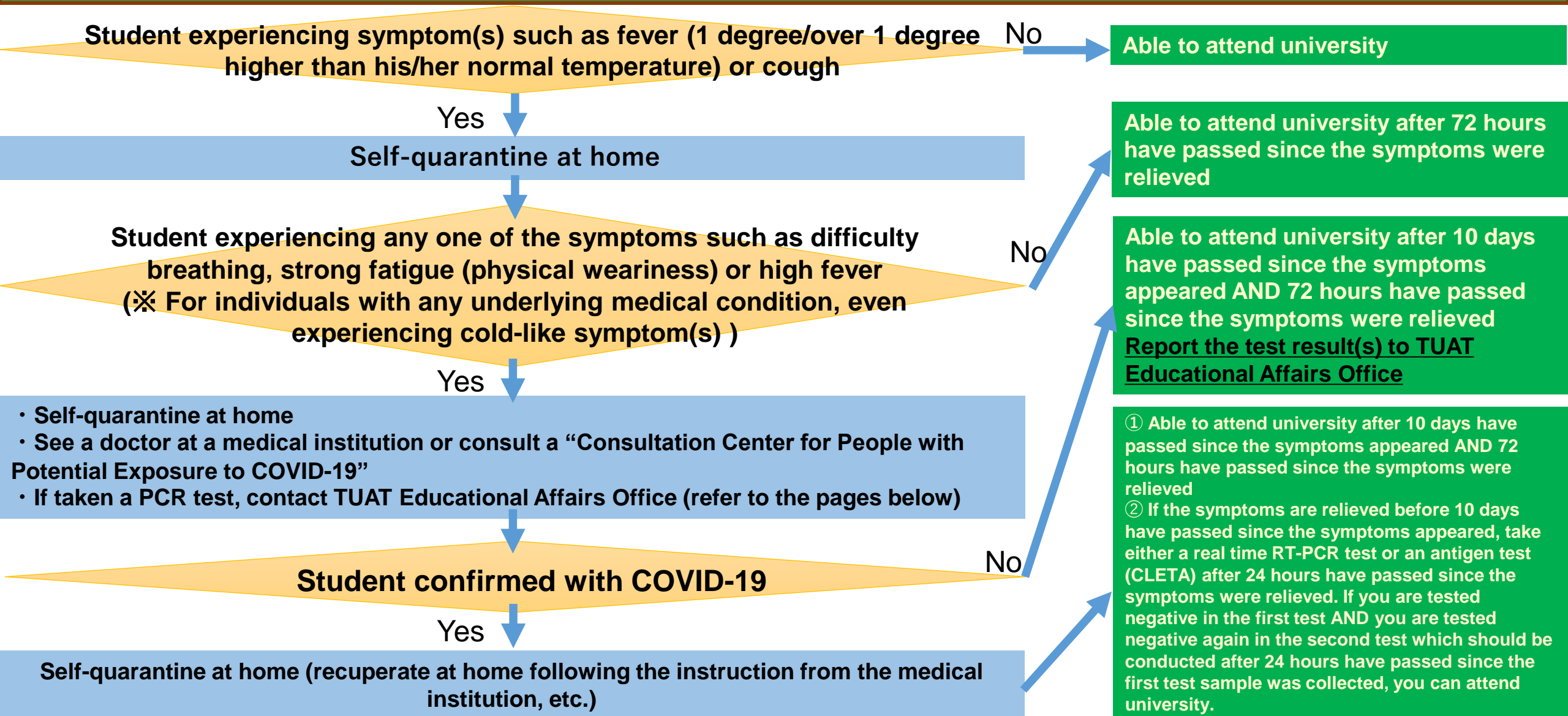
○新型コロナウイルス感染の疑いがある場合は、お住いの地域の帰国者・接触者相談センターに相談してください。

- ・ 息苦しさ、強いだるさ、高熱等の強い症状のいずれかがある。
- ・ 重症化しやすい方（※）で、発熱や咳などの比較的軽い風邪の症状がある。  
（※）高齢者、糖尿病、心不全、呼吸器疾患（COPD等）等の基礎疾患がある、透析を受けている、免疫抑制剤や抗がん剤等を用いている
- ・ 発熱や咳など比較的軽い風邪の症状が4日以上続く。
- ・ 感染者と濃厚接触した。

帰国者・接触者相談  
センターのHPまとめ  
（厚生労働省HP）



# Self-Quarantine Guide When Student Him/Herself is in Poor Physical Condition



※ However, the number of days/hours given here is a guide. There is a possibility that the actual self-quarantine period may be longer than the period suggested by this guide, depending on the decision of the head of the department (or etc.) where the student belongs to, based on the situation of each student.

# Self-Quarantine Guide When Student's Family Member, etc. is in Poor Physical Condition

Student him/herself experiencing no symptom; however, a family member, etc. experiencing symptom(s) such as fever (1 degree/over 1 degree higher than his/her normal temperature) or cough

No

Able to attend university

Yes

Student him/herself is to self-quarantine at home

Family member, etc. experiencing any one of the symptoms such as difficulty breathing, strong fatigue (physical weariness) or high fever  
(※ For individuals with any underlying medical condition, even experiencing cold-like symptom(s) )

No

Student is able to attend university after 72 hours have passed since the symptoms the family member, etc. experienced were relieved

Yes

- Student him/herself is to self-quarantine at home
- Family member, etc. is to see a doctor at a medical institution or consult a “Consultation Center for People with Potential Exposure to COVID-19”

Student is able to attend university after 72 hours have passed since the symptoms the family member, etc. experienced were relieved

Student him/herself identified as a Close Contact to a COVID-19 positive individual

No

① If the student him/herself tested positive for a PCR test, the student is able to attend university after 10 days have passed since the test was conducted AND 72 hours have passed without the symptoms re-appearing.  
② If the student him/herself tested negative for a PCR test, the student is able to attend university after 10 days have passed since the symptoms the family member, etc. experienced appeared AND 72 hours have passed since the symptoms the family member, etc. experienced were relieved (However, the student should observe his/her health conditions for the next 14 days).  
**Report the test result(s) to TUAT Educational Affairs Office**

Yes

- Student him/herself is to self-quarantine at home (take a test following the instruction from the public healthcare center, etc.)
- Contact TUAT Educational Affairs Office (refer to the pages below)

※ However, the number of days/hours given here is a guide. There is a possibility that the actual self-quarantine period may be longer than the period suggested by this guide, depending on the decision of the head of the department (or etc.) where the student belongs to, based on the situation of each student.



# If taken/will be taking a PCR test, specified as a close contact of a COVID-19 case or confirmed with COVID-19

If a TUAT student has taken/will be taking a PCR test due to a suspected infection, has been specified as a close contact of a COVID-19 case, or has been infected with the virus, please contact the following.

## 【Contact】

TUAT Educational Affairs Office

042-367-5537

※During **Non-Office Hours** (on weekends/holidays, on weekdays 17:15 -8:30):  
090-5773-8562 (for international students)

We will ask:

- Name, student number, contact information
  - People (affiliated with TUAT) in contact with during the past 2 weeks
  - On-campus buildings used in the past 2 weeks
- 
- If having cold-like symptoms (fever, cough, sore throat, runny nose, etc.), please stay at home and take rest.
  - If suspected of COVID-19 as listed below, contact a consultation call center in your residential area on the website below.

### Do you have symptoms like below?

- Experiencing any of the severe symptoms such as difficulty in breathing, strong fatigue, or high fever
- People at higher risk for developing serious complications\* while experiencing relatively light cold-like symptoms such as fever or cough, etc.  
\*elderly; people with underlying medical conditions such as diabetes, heart or lung/respiratory tract disease (COPD, etc.); people on dialysis, people on immunosuppressants or anti-cancer agents
- Having relatively light cold-like symptoms such as fever or cough which have continued for 4 days or longer
- Had/have been in close contact with a person confirmed with COVID-19

[Redacted]

[Redacted]

### Consultation Call Centers for:

- People who have suspected symptoms
- People who had/have been in close contact with a person confirmed with COVID-19

[Redacted]

[Redacted]

[Redacted]

[Redacted]

[Redacted]

[Redacted]